

## 2001-2002 KINDERGARTEN IMMUNIZATION ASSESSMENT RESULTS

The California Department of Health Services, Immunization Branch (IZ) conducts school assessments each fall to monitor compliance with California school immunization law. Assessments are performed at licensed childcare/Head Start centers, kindergartens, and seventh grade schools.

The IZ Branch sends out assessment forms to all of these institutions in California each September. School staff complete the kindergarten and seventh grade assessment forms and return them to the IZ Branch.

California School Immunization Law changes as new vaccines are developed and introduced into the Immunization Schedule. As of July 1, 2001, one dose of varicella (chickenpox) vaccine or physician-documented disease and/or immunity is required for entry into childcare and kindergarten.

8,705 kindergartens reported with active enrollment for the school year 2001-2002. Our analysis of immunization coverage level was based on the students enrolled in these schools. The total enrollment reported by these schools was 523,516 kindergarten students, a slight decrease as compared to previous years (table1).

**Table 1: Kindergarten Immunization Assessment,  
1999-2000 to 2001-2002 School Years**

	1999-2000	2000-2001	2001-2002
<b>Number of Schools</b>	8,539	8,473	8,705
<b>Number of Students</b>	527,640	526,466	523,516
<b>Pct. With all Req. Imm.</b>	91.9%	92.2%	90.9%

This year's immunization assessment shows that compliance with the new varicella immunization requirement<sup>1</sup> is very high at 95.6% (figure 1). The percent of kindergarten students with all required immunizations, including varicella is 90.9%, slightly less than previous years (table 1). The coverage levels for the other individual antigens are similar to those observed in previous years (figure 1).

This year, 0.14% and 1.19% of kindergarten students had permanent medical exemptions (PME) and personal beliefs exemptions (PBE), respectively. The percent of children with PBEs this year is almost twice as high as previous years (figure 2). Historically, increases in PBEs are associated with new vaccine requirements.

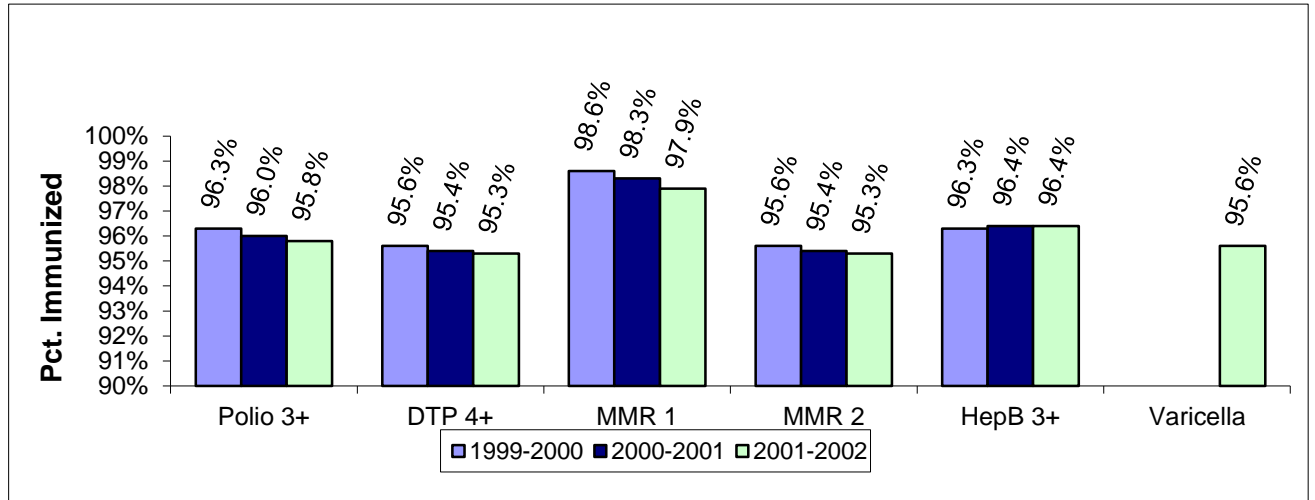
Statewide breakdowns by county and type of school are enclosed in the Coordinator Updates. Data by school district will be sent to county coordinators. Data by school district and by individual school are also available upon request. For further

---

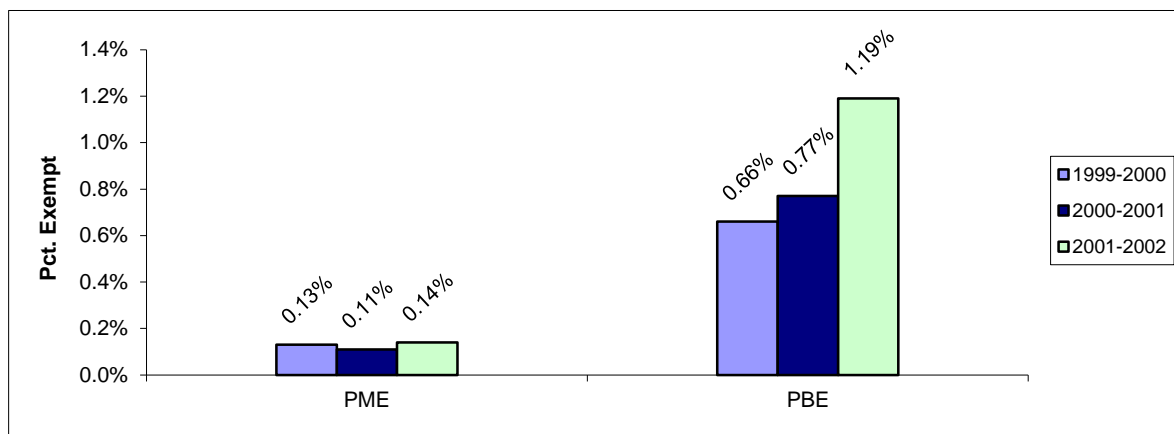
<sup>1</sup> One dose of varicella vaccine or physician documented disease/immunity.

information regarding the Kindergarten Assessment, please contact Nadine Wei at 510/540-2993(e-mail [nwei@dhs.ca.gov](mailto:nwei@dhs.ca.gov)) or Elisha Larez at 510/ 540-3147(e-mail [elarez@dhs.ca.gov](mailto:elarez@dhs.ca.gov)).

**Figure 1: Percent of California Kindergarteners Immunized, by Antigen: Fall Kindergarten Immunization Assessment, 1999-2000 to 2001-2002 School Years**



**Figure 2: Percent of California Kindergarteners with PME and PBE Exemptions: Kindergarten Immunization Assessment, 1999-2000 to 2001-2002 School Years**



KINDERGARTEN IMMUNIZATION ASSESSMENT - CALIFORNIA, 2001-2002

1

TABLE 2: TOTAL ENROLLMENT AND ADMISSION STATUS  
BY COUNTY

	TOTAL STUDENTS	ENTRANTS WITH ALL REQ. IMMUN.		CONDITIONAL ENTRANTS		ENTRANTS WITH PME		ENTRANTS WITH PBE	
	NUMBER	NUMBER	PERCENT	NUMBER	PERCENT	NUMBER	PERCENT	NUMBER	PERCENT
STATE TOTAL	523,516	475,602	90.85%	40,979	7.83%	710	0.14%	6,225	1.19%
COUNTY									
ALAMEDA	19,624	17,517	89.26%	1,951	9.94%	27	0.14%	129	0.66%
ALPINE	26	23	88.46%	3	11.54%	0	0.00%	0	0.00%
AMADOR	352	334	94.89%	11	3.13%	0	0.00%	7	1.99%
BUTTE	2,608	2,361	90.53%	161	6.17%	12	0.46%	74	2.84%
CALAVERAS	407	375	92.14%	7	1.72%	0	0.00%	25	6.14%
COLUSA	322	301	93.48%	19	5.90%	1	0.31%	1	0.31%
CONTRA COSTA	13,666	12,857	94.08%	626	4.58%	27	0.20%	156	1.14%
DEL NORTE	310	298	96.13%	9	2.90%	0	0.00%	3	0.97%
EL DORADO	2,083	1,860	89.29%	137	6.58%	6	0.29%	80	3.84%
FRESNO	14,399	13,699	95.14%	566	3.93%	15	0.10%	119	0.83%
GLENN	435	407	93.56%	25	5.75%	0	0.00%	3	0.69%
HUMBOLDT	1,497	1,272	84.97%	146	9.75%	5	0.33%	74	4.94%
IMPERIAL	2,501	2,348	93.88%	146	5.84%	1	0.04%	6	0.24%
INYO	242	228	94.21%	9	3.72%	0	0.00%	5	2.07%
KERN	11,960	11,171	93.40%	618	5.17%	16	0.13%	155	1.30%
KINGS	2,351	2,235	95.07%	95	4.04%	3	0.13%	18	0.77%
LAKE	749	604	80.64%	121	16.15%	1	0.13%	23	3.07%
LASSEN	371	316	85.18%	37	9.97%	1	0.27%	17	4.58%
LOS ANGELES	151,073	134,363	88.94%	15,687	10.38%	122	0.08%	901	0.60%
MADERA	2,243	2,032	90.59%	180	8.02%	1	0.04%	30	1.34%
MARIN	2,766	2,453	88.68%	191	6.91%	17	0.61%	105	3.80%
MARIPOSA	182	147	80.77%	28	15.38%	0	0.00%	7	3.85%
MENDOCINO	1,027	868	84.52%	109	10.61%	4	0.39%	46	4.48%
MERCED	4,122	3,917	95.03%	185	4.49%	5	0.12%	15	0.36%
MODOC	151	124	82.12%	13	8.61%	0	0.00%	14	9.27%
MONO	150	140	93.33%	8	5.33%	0	0.00%	2	1.33%
MONTEREY	6,275	5,966	95.08%	255	4.06%	2	0.03%	52	0.83%
NAPA	1,580	1,428	90.38%	121	7.66%	3	0.19%	28	1.77%
NEVADA	957	761	79.52%	84	8.78%	3	0.31%	109	11.39%

TABLE 2: TOTAL ENROLLMENT AND ADMISSION STATUS  
BY COUNTY

	TOTAL STUDENTS	ENTRANTS WITH ALL REQ. IMMUN.		CONDITIONAL ENTRANTS		ENTRANTS WITH PME		ENTRANTS WITH PBE	
	NUMBER	NUMBER	PERCENT	NUMBER	PERCENT	NUMBER	PERCENT	NUMBER	PERCENT
STATE TOTAL	523,516	475,602	90.85%	40,979	7.83%	710	0.14%	6,225	1.19%
COUNTY									
ORANGE	45,341	41,304	91.10%	3,473	7.66%	87	0.19%	477	1.05%
PLACER	4,420	3,975	89.93%	290	6.56%	11	0.25%	144	3.26%
PLUMAS	198	174	87.88%	9	4.55%	0	0.00%	15	7.58%
RIVERSIDE	26,987	25,007	92.66%	1,711	6.34%	34	0.13%	235	0.87%
SACRAMENTO	18,669	16,265	87.12%	2,109	11.30%	17	0.09%	278	1.49%
SAN BENITO	981	923	94.09%	51	5.20%	2	0.20%	5	0.51%
SAN BERNARDINO	30,546	28,879	94.54%	1,301	4.26%	38	0.12%	328	1.07%
SAN DIEGO	41,688	38,754	92.96%	2,185	5.24%	49	0.12%	700	1.68%
SAN FRANCISCO	6,621	5,906	89.20%	684	10.33%	4	0.06%	27	0.41%
SAN JOAQUIN	10,031	9,391	93.62%	545	5.43%	17	0.17%	78	0.78%
SAN LUIS OBISPO	2,695	2,436	90.39%	144	5.34%	16	0.59%	99	3.67%
SAN MATEO	8,382	7,430	88.64%	826	9.85%	18	0.21%	108	1.29%
SANTA BARBARA	5,749	5,156	89.69%	396	6.89%	12	0.21%	185	3.22%
SANTA CLARA	24,690	22,325	90.42%	2,095	8.49%	40	0.16%	230	0.93%
SANTA CRUZ	3,456	3,052	88.31%	222	6.42%	10	0.29%	172	4.98%
SHASTA	2,205	1,952	88.53%	166	7.53%	2	0.09%	85	3.85%
SIERRA	40	35	87.50%	4	10.00%	0	0.00%	1	2.50%
SISKIYOU	486	413	84.98%	32	6.58%	0	0.00%	41	8.44%
SOLANO	5,912	5,519	93.35%	332	5.62%	12	0.20%	49	0.83%
SONOMA	5,924	5,298	89.43%	383	6.47%	10	0.17%	233	3.93%
STANISLAUS	8,205	7,695	93.78%	371	4.52%	6	0.07%	133	1.62%
SUTTER	1,275	1,219	95.61%	52	4.08%	1	0.08%	3	0.24%
TEHAMA	821	742	90.38%	47	5.72%	3	0.37%	29	3.53%
TRINITY	140	126	90.00%	3	2.14%	0	0.00%	11	7.86%
TULARE	7,347	6,881	93.66%	372	5.06%	21	0.29%	73	0.99%
TUOLUMNE	591	441	74.62%	108	18.27%	1	0.17%	41	6.94%
VENTURA	12,143	10,762	88.63%	1,169	9.63%	24	0.20%	188	1.55%
YOLO	2,291	2,106	91.92%	150	6.55%	0	0.00%	35	1.53%
YUBA	1,253	1,031	82.28%	201	16.04%	3	0.24%	18	1.44%

TABLE 3: STUDENTS ADEQUATELY IMMUNIZED  
BY COUNTY

	TOTAL STUDENTS	DTP 4+		POLIO 3+		MMR 1		MMR 2		HEP B 3+		VAR 1+	
	NUMBER	NUMBER	PERCENT	NUMBER	PERCENT	NUMBER	PERCENT	NUMBER	PERCENT	NUMBER	PERCENT	NUMBER	PERCENT
STATE TOTAL	523,516	498,639	95.25%	501,553	95.80%	512,271	97.85%	499,073	95.33%	504,732	96.41%	500,455	95.59%
COUNTY													
ALAMEDA	19,624	18,539	94.47%	18,707	95.33%	19,232	98.00%	18,584	94.70%	18,958	96.61%	18,604	94.80%
ALPINE	26	23	88.46%	23	88.46%	26	100.00%	23	88.46%	26	100.00%	26	100.00%
AMADOR	352	342	97.16%	342	97.16%	345	98.01%	339	96.31%	344	97.73%	341	96.88%
BUTTE	2,608	2,450	93.94%	2,473	94.82%	2,513	96.36%	2,448	93.87%	2,491	95.51%	2,456	94.17%
CALAVERAS	407	380	93.37%	380	93.37%	382	93.86%	377	92.63%	382	93.86%	380	93.37%
COLUSA	322	315	97.83%	315	97.83%	320	99.38%	315	97.83%	312	96.89%	315	97.83%
CONTRA COSTA	13,666	13,166	96.34%	13,229	96.80%	13,395	98.02%	13,146	96.19%	13,295	97.29%	13,274	97.13%
DEL NORTE	310	302	97.42%	304	98.06%	307	99.03%	302	97.42%	306	98.71%	304	98.06%
EL DORADO	2,083	1,959	94.05%	1,964	94.29%	1,992	95.63%	1,946	93.42%	1,963	94.24%	1,930	92.65%
FRESNO	14,399	14,001	97.24%	14,084	97.81%	14,223	98.78%	14,091	97.86%	14,052	97.59%	14,062	97.66%
GLENN	435	426	97.93%	428	98.39%	431	99.08%	424	97.47%	426	97.93%	415	95.40%
HUMBOLDT	1,497	1,342	89.65%	1,341	89.58%	1,406	93.92%	1,346	89.91%	1,381	92.25%	1,335	89.18%
IMPERIAL	2,501	2,439	97.52%	2,446	97.80%	2,489	99.52%	2,430	97.16%	2,453	98.08%	2,427	97.04%
INYO	242	231	95.45%	233	96.28%	235	97.11%	232	95.87%	233	96.28%	232	95.87%
KERN	11,960	11,542	96.51%	11,621	97.17%	11,779	98.49%	11,569	96.73%	11,555	96.61%	11,576	96.79%
KINGS	2,351	2,295	97.62%	2,308	98.17%	2,328	99.02%	2,317	98.55%	2,293	97.53%	2,307	98.13%
LAKE	749	679	90.65%	691	92.26%	717	95.73%	692	92.39%	696	92.92%	650	86.78%
LASSEN	371	330	88.95%	333	89.76%	345	92.99%	331	89.22%	345	92.99%	331	89.22%
LOS ANGELES	151,073	143,389	94.91%	144,367	95.56%	147,770	97.81%	143,483	94.98%	145,402	96.25%	144,036	95.34%
MADERA	2,243	2,117	94.38%	2,137	95.27%	2,195	97.86%	2,123	94.65%	2,160	96.30%	2,155	96.08%
MARIN	2,766	2,571	92.95%	2,580	93.28%	2,625	94.90%	2,548	92.12%	2,574	93.06%	2,575	93.09%
MARIPOSA	182	170	93.41%	169	92.86%	173	95.05%	159	87.36%	169	92.86%	163	89.56%
MENDOCINO	1,027	933	90.85%	937	91.24%	974	94.84%	921	89.68%	960	93.48%	914	89.00%
MERCED	4,122	4,027	97.70%	4,041	98.03%	4,101	99.49%	4,038	97.96%	4,042	98.06%	4,034	97.87%
MODOC	151	132	87.42%	134	88.74%	137	90.73%	133	88.08%	134	88.74%	127	84.11%
MONO	150	141	94.00%	146	97.33%	147	98.00%	145	96.67%	147	98.00%	147	98.00%
MONTEREY	6,275	6,115	97.45%	6,133	97.74%	6,207	98.92%	6,111	97.39%	6,130	97.69%	6,147	97.96%
NAPA	1,580	1,493	94.49%	1,495	94.62%	1,540	97.47%	1,488	94.18%	1,511	95.63%	1,495	94.62%
NEVADA	957	791	82.65%	792	82.76%	827	86.42%	788	82.34%	821	85.79%	798	83.39%

TABLE 3: STUDENTS ADEQUATELY IMMUNIZED  
BY COUNTY

	TOTAL STUDENTS	DTP 4+		POLIO 3+		MMR 1		MMR 2		HEP B 3+		VAR 1+	
	NUMBER	NUMBER	PERCENT	NUMBER	PERCENT	NUMBER	PERCENT	NUMBER	PERCENT	NUMBER	PERCENT	NUMBER	PERCENT
STATE TOTAL	523,516	498,639	95.25%	501,553	95.80%	512,271	97.85%	499,073	95.33%	504,732	96.41%	500,455	95.59%
COUNTY													
ORANGE	45,341	43,381	95.68%	43,483	95.90%	44,574	98.31%	43,162	95.19%	43,968	96.97%	43,445	95.82%
PLACER	4,420	4,089	92.51%	4,117	93.14%	4,197	94.95%	4,132	93.48%	4,146	93.80%	4,096	92.67%
PLUMAS	198	176	88.89%	181	91.41%	183	92.42%	178	89.90%	182	91.92%	181	91.41%
RIVERSIDE	26,987	26,082	96.65%	26,243	97.24%	26,641	98.72%	26,097	96.70%	26,160	96.94%	26,192	97.05%
SACRAMENTO	18,669	17,321	92.78%	17,480	93.63%	18,215	97.57%	17,436	93.40%	17,960	96.20%	17,355	92.96%
SAN BENITO	981	951	96.94%	963	98.17%	966	98.47%	959	97.76%	961	97.96%	959	97.76%
SAN BERNARDINO	30,546	29,593	96.88%	29,776	97.48%	30,103	98.55%	29,751	97.40%	29,784	97.51%	29,740	97.36%
SAN DIEGO	41,688	39,769	95.40%	39,972	95.88%	40,704	97.64%	39,929	95.78%	40,197	96.42%	40,119	96.24%
SAN FRANCISCO	6,621	6,221	93.96%	6,260	94.55%	6,451	97.43%	6,297	95.11%	6,356	96.00%	6,202	93.67%
SAN JOAQUIN	10,031	9,708	96.78%	9,747	97.17%	9,855	98.25%	9,729	96.99%	9,749	97.19%	9,669	96.39%
SAN LUIS OBISPO	2,695	2,517	93.40%	2,528	93.80%	2,566	95.21%	2,505	92.95%	2,522	93.58%	2,505	92.95%
SAN MATEO	8,382	7,861	93.78%	7,894	94.18%	8,147	97.20%	7,880	94.01%	8,037	95.88%	7,915	94.43%
SANTA BARBARA	5,749	5,386	93.69%	5,410	94.10%	5,527	96.14%	5,369	93.39%	5,410	94.10%	5,393	93.81%
SANTA CLARA	24,690	23,615	95.65%	23,759	96.23%	24,322	98.51%	23,604	95.60%	23,893	96.77%	23,631	95.71%
SANTA CRUZ	3,456	3,191	92.33%	3,192	92.36%	3,265	94.47%	3,166	91.61%	3,193	92.39%	3,176	91.90%
SHASTA	2,205	2,037	92.38%	2,051	93.02%	2,110	95.69%	2,039	92.47%	2,097	95.10%	2,022	91.70%
SIERRA	40	35	87.50%	36	90.00%	39	97.50%	36	90.00%	37	92.50%	38	95.00%
SISKIYOU	486	433	89.09%	433	89.09%	443	91.15%	421	86.63%	441	90.74%	426	87.65%
SOLANO	5,912	5,692	96.28%	5,721	96.77%	5,813	98.33%	5,700	96.41%	5,728	96.89%	5,726	96.85%
SONOMA	5,924	5,542	93.55%	5,561	93.87%	5,664	95.61%	5,532	93.38%	5,540	93.52%	5,508	92.98%
STANISLAUS	8,205	7,928	96.62%	7,957	96.98%	8,048	98.09%	7,933	96.68%	7,955	96.95%	7,900	96.28%
SUTTER	1,275	1,250	98.04%	1,255	98.43%	1,268	99.45%	1,243	97.49%	1,254	98.35%	1,244	97.57%
TEHAMA	821	762	92.81%	771	93.91%	782	95.25%	773	94.15%	771	93.91%	770	93.79%
TRINITY	140	128	91.43%	128	91.43%	129	92.14%	129	92.14%	126	90.00%	129	92.14%
TULARE	7,347	7,083	96.41%	7,084	96.42%	7,237	98.50%	7,093	96.54%	7,114	96.83%	7,144	97.24%
TUOLUMNE	591	498	84.26%	501	84.77%	536	90.69%	476	80.54%	530	89.68%	497	84.09%
VENTURA	12,143	11,441	94.22%	11,562	95.22%	11,865	97.71%	11,340	93.39%	11,663	96.05%	11,578	95.35%
YOLO	2,291	2,185	95.37%	2,197	95.90%	2,246	98.04%	2,177	95.02%	2,205	96.25%	2,208	96.38%
YUBA	1,253	1,124	89.70%	1,138	90.82%	1,214	96.89%	1,138	90.82%	1,192	95.13%	1,131	90.26%

TABLE 4: NUMBER OF SCHOOLS REPORTING  
BY COUNTY AND TYPE

	TOTAL NUMBER OF SCHOOLS	SCHOOL TYPE			
		PUBLIC		PRIVATE	
		NUMBER OF SCHOOLS	PERCENT OF TOTAL	NUMBER OF SCHOOLS	PERCENT OF TOTAL
STATE TOTAL	8,705	5,478	62.93%	3,227	37.07%
COUNTY					
ALAMEDA	371	224	60.38%	147	39.62%
ALPINE	2	1	50.00%	1	50.00%
AMADOR	9	6	66.67%	3	33.33%
BUTTE	65	49	75.38%	16	24.62%
CALAVERAS	12	11	91.67%	1	8.33%
COLUSA	6	5	83.33%	1	16.67%
CONTRA COSTA	238	144	60.50%	94	39.50%
DEL NORTE	11	8	72.73%	3	27.27%
EL DORADO	43	32	74.42%	11	25.58%
FRESNO	205	169	82.44%	36	17.56%
GLENN	10	10	100.00%	0	0.00%
HUMBOLDT	63	54	85.71%	9	14.29%
IMPERIAL	44	36	81.82%	8	18.18%
INYO	9	8	88.89%	1	11.11%
KERN	181	133	73.48%	48	26.52%
KINGS	40	29	72.50%	11	27.50%
LAKE	17	12	70.59%	5	29.41%
LASSEN	13	12	92.31%	1	7.69%
LOS ANGELES	2,292	1,211	52.84%	1,081	47.16%
MADERA	40	36	90.00%	4	10.00%
MARIN	75	45	60.00%	30	40.00%
MARIPOSA	9	9	100.00%	0	0.00%
MENDOCINO	37	30	81.08%	7	18.92%
MERCED	67	48	71.64%	19	28.36%
MODOC	7	6	85.71%	1	14.29%
MONO	8	7	87.50%	1	12.50%
MONTEREY	89	72	80.90%	17	19.10%
NAPA	40	24	60.00%	16	40.00%
NEVADA	32	28	87.50%	4	12.50%

TABLE 4: NUMBER OF SCHOOLS REPORTING  
BY COUNTY AND TYPE

	TOTAL NUMBER OF SCHOOLS	SCHOOL TYPE			
		PUBLIC		PRIVATE	
		NUMBER OF SCHOOLS	PERCENT OF TOTAL	NUMBER OF SCHOOLS	PERCENT OF TOTAL
STATE TOTAL	8,705	5,478	62.93%	3,227	37.07%
COUNTY					
ORANGE	696	384	55.17%	312	44.83%
PLACER	79	58	73.42%	21	26.58%
PLUMAS	7	6	85.71%	1	14.29%
RIVERSIDE	369	232	62.87%	137	37.13%
SACRAMENTO	331	227	68.58%	104	31.42%
SAN BENITO	20	15	75.00%	5	25.00%
SAN BERNARDINO	431	295	68.45%	136	31.55%
SAN DIEGO	674	411	60.98%	263	39.02%
SAN FRANCISCO	159	77	48.43%	82	51.57%
SAN JOAQUIN	159	118	74.21%	41	25.79%
SAN LUIS OBISPO	64	45	70.31%	19	29.69%
SAN MATEO	185	109	58.92%	76	41.08%
SANTA BARBARA	102	71	69.61%	31	30.39%
SANTA CLARA	396	246	62.12%	150	37.88%
SANTA CRUZ	65	44	67.69%	21	32.31%
SHASTA	60	46	76.67%	14	23.33%
SIERRA	4	4	100.00%	0	0.00%
SISKIYOU	28	24	85.71%	4	14.29%
SOLANO	93	62	66.67%	31	33.33%
SONOMA	145	100	68.97%	45	31.03%
STANISLAUS	129	93	72.09%	36	27.91%
SUTTER	33	25	75.76%	8	24.24%
TEHAMA	22	20	90.91%	2	9.09%
TRINITY	12	11	91.67%	1	8.33%
TULARE	110	92	83.64%	18	16.36%
TUOLUMNE	17	13	76.47%	4	23.53%
VENTURA	210	134	63.81%	76	36.19%
YOLO	41	32	78.05%	9	21.95%
YUBA	29	25	86.21%	4	13.79%